

30. Setkání kateder mechaniky tekutin a termomechaniky



22.-24.6. 2011

Špindlerův Mlýn

Jednotlivý příspěvek ze sborníku



TECHNICKÁ UNIVERZITA V LIBERCI



evropský
sociální
fond v ČR



EVROPSKÁ UNIE



MINISTERSTVO ŠKOLSTVÍ,
MLÁDEŽE A TĚLOVÝCHOVY



OP Vzdělávání
pro konkurenceschopnost

INVESTICE DO ROZVOJE VZDĚLÁVÁNÍ

Optimization of oil-structure interaction

Jan KOLÁŘ¹

¹ Ing. Jan Kolář, Technická univerzita v Liberci, Studentská 2, Liberec, jan.kolar1@tul.cz

Abstrakt: *This paper reports the numerical investigation and optimization of a damping unit where oil flow interacts with an elastic chocking plate. Chocking of flow from a by-pass valve is the basic principle of hydraulic shock absorbers. However, cavitation phenomenon caused by strong shocking occurs at high frequencies of an actuating movement and the original damping unit characteristic is being distorted. We used the computational fluid dynamic to minimize the distortion of characteristic as much as possible. To satisfy the high number of unsteady simulations, the involved fluid-structure interaction needs to be coupled in a different way than the routine is. The plate deformation is coupled with an average hydrodynamic loading pressure by a single afore-computed third polynomial equation being predicted by FEM. Numerical simulations of flow by the use of FVM exploiting dynamic mesh in Fluent commercial code then provides a flow field pattern and loading pressure within the unit itself. A User Defined Function (UDF) enables the deformation of the domain boundaries in a coupled way. Finally, the time dependency of the plate position and its dynamic behaviour is obtained. Highly dynamic manners appeared and numerous techniques providing a better stability of computations had to be investigated and developed. The state where the most cavity bubbles are being induced is further applied to shape optimization at the steady state. The shape-based similarity optimization by-pass geometry is then carried out to minimize the formation of cavity bubbles.*

1 Introduction

Oil-structure interaction can be found in many engineering devices. One of the most typical is represented by originally stiff plate loaded and deformed by the surrounding oil flow. Consequently, the chocking plate truckles to loading and gets deformed. In computational fluid dynamics (CFD), the number of iterative steps is needed to solve the steady state of oil flow and the resulting plate shape which corresponds one to another. In our case, oil flow is induced by the sinusoidal movement of the unit walls with respect to the relation that follows

$$y^{+-} = y_0 \pm A \cdot \sin(2 \cdot \pi \cdot f \cdot t) \quad (1)$$

Finally the task is necessarily unsteady with a frequency of $f=2$ Hz. We decided to apply the simplified, but more efficient approach to get into the solved problem because the conventional approach with intercommunication and data transfers between FVM and FEM solvers gains unacceptable time cost for unsteady simulations. The non-conventional approach of

the mentioned task includes the number of applied techniques and requirements such as dynamic domains, self-guarding routines, and deforming functions.

2 Fluid-structure coupling

The dynamic computational domain feature allows the computational domain to change its shape with conserved topology with respect to the prescribed relation which relates the surface loading and structure stiffness. As a result, unsteady simulations are not composed from the set of solutions of segregated domains being solved from initialization. Instead, the dynamic solution of the initial domain which underlies the deformation is performed. The computational grid changes upon the predicted shape which results from pressure load at the deformed boundary. More detailed view can be taken in [1] and [2]. The predicted shape, is afore-computed by FEM analysis in Mark 3D software package. The surface of the observed plate is one-sidedly loaded by substitutive pressure. This approach presumes minimal or even

negligible twist deformation. This condition is being met as tested in numerous cases. The plate is made of spring steel 12 090 with $R_m=950\text{Mpa}$ and $E=2.171 \cdot 10^{11} \text{ Pa}$ and fully fixed all-around the inner diameter- r . The shape-substitutive cubic polynomial is derived from the predicted deformation by the method of least squares employing Gauss elimination. The local deformation of the boundary node at the radial coordinate $\varphi_j = R - r_j$, is then given by an average loading pressure. Due to the fluid-structure interaction, the plate position always affects the surrounding flow field. This has an effect of overestimated plate position predicted. We have tested and applied absorber coefficient k which corrects the increase of the actual plate position defined as

$$\Delta x'_j = \Delta x_j * k \text{ where } k \in R \mid 0 < k < 1. \quad (2)$$

The underestimation of the total plate position by coefficient k is limited by the differential approach. A new plate position is based on the actual position and computed increase of coordinate corrected by k . The dynamic movement of the plate was observed even when the nonsensical movements were smoothed out. This led to a large deformation of grid elements or even to a formation of negative cell volume. To avoid this, the self-guarding routine was implemented into the source code. The routine of the source code supervises the maximal increase of coordinate available at the base of the quality of boundary adjacent cells. The ultimate angular node displacement is established from the equation

$$tg(d\alpha_{\max}) \equiv \min \left\{ \frac{3 \cdot \vec{dr}[0]_i}{r_{\max, \mathcal{C}}}, \dots, \frac{3 \cdot \vec{dr}[0]_N}{r_{\max, N}} \right\} \quad (3)$$

More detailed expression can be found in [3].

3 CFD simulations

We used the commercial CFD package Fluent version 6.3 to solve the 3D RANS equations for the incompressible oil phase, with a time step $1\text{E}-5\text{s}$ by the final volume technique. The model of the domain consists only from a period of one twelfth of the real device. The

turbulence model $k-\varepsilon$ Standard completes the system of governing equations [4]. For all equations, convective terms are discretized using a second-order upwind scheme except the linear one for pressure. The discretized system is solved in a simple way. A pressure based, first order implicit solver was used for unsteady formulation when dynamic mesh applied. A cavitation phenomenon is enabled by the secondary phase defined as compressible oil vapour with a saturated pressure of 6 kPa [4]. The criterion for assessing convergence was based on the root mean square of the density residues expressed by

$$R(\xi) = \left[\sum_{i=1}^M \left(\frac{\partial \xi}{\partial t} \right)_i^2 \right]^{1/2} \quad (5)$$

Where M is the number of grid points and ξ is the variable considered to check (mass, energy, momentum, etc.). Generally, the next time step is taken when residuals fall below $1\text{E}-4$.

4 Unsteady interaction

For brief examples of results, see Figure 2.

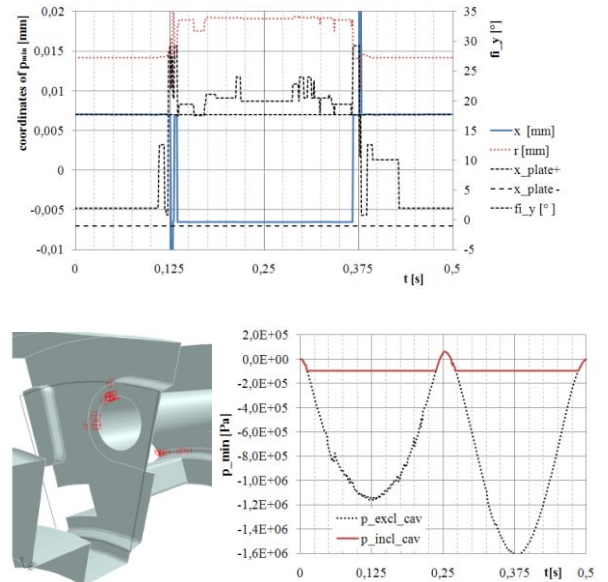


Figure 2: Spatial localization of pressure minima $p_{\min}(x, r, fi_y)$ (above) and its 3D visualization in various time steps for $f=2\text{Hz}$ (left below). Temporal localization of pressure minima (right below).

Axial and radial coordinate x, r and angular coordinate fi_y define the positions of pressure

minima responsible for cavitation within time period. See top of Figure 2. To get easier in the task, see bottom part of Figure 2. The level of minimum pressure follows the actual oil flow velocity until the saturation pressure is achieved. From the case with cavitation excluded, the consequent smooth tendency of pressure minima can be observed (even if the result is not fully physically meaningful).

5 Steady optimization

We tried to find the combination of by-pass channel shape and plate stiffness with conserved pressure jump to minimize the production of cavity bubbles. We decided to apply the optimization procedure to the stationary state adequate to $t=0.05$ s from the bottom dead centre. This state is of fully developed cavity flow with an acceptable mass flow rate through the valve, not very threatening for the numerical stability of simulations itself. For the optimization itself, the shape based similarity optimization developed and described in [1] was applied. The shape of the by-pass nozzle is given by the cubic spline, computed simultaneously from the set of three given parameters y_1 , $y_2=y_0$ and α_2 , see Figure 3. We applied the ordinary Gauss's elimination method to find out the spline coefficients. The fourth parameter is the plate lift, used to adjust the oil mass flow rate to the value being equal to the real mass flow at 0.05s. The iterative adjustment of plate lift is provided by simple Newton's gradient method with maximum six steps. We applied the dynamic mesh model update to derive the most benefits of the minimal deformation path given by the shape-based similarity. A User Defined Functions (UDF) described in [3] and applied by Dvořák in [2] is compiled to drive the wall boundary deformation over the whole sequence of nozzle shapes (vectors). The original domain that underlies the deformation has a simple linear shape. UDF updates the y-coordinate (y_{node}) of each node at time $t+1$ (new shape) according to the spring based deformation based on node-wall distance.

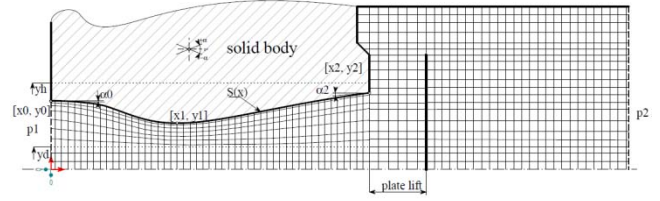


Figure 3: Scheme of domain for optimization of channel shape and choking plate stiffness. Driving parameters of spline: y_1 , $y_0=y_2$, α_2 and boundary conditions.

The first section of separate optimization procedures includes the selection of location vectors from the parametric space and consequential optimization of vector sequence in order to minimize the overall deformation defined as follows

$$D_{tot} = \sum_{i=1}^{N-1} D(c_i, c_{i+1}), \text{ where } N = \text{no. of shapes} \quad (6)$$

Here $D(c_i, c_{i+1})$ is the Euclidean distance between vectors (shapes) in R^2 and c, c' are two data series (series of y-coordinate vectors) as follows. Flow, turbulence, and status variables in control volume and their fluxes are preserved for the newly formed mesh from the previous shape. To satisfy the condition of acceptable small boundary deformation, the shortest distance D_{tot} needs to be found out. This problem can be associated as a well-known Travelling Salesman Problem. The decision version of TSP belongs to NP-complete problems. The Genetic algorithm presented firstly by Holland in [5] is suitable for TSP. We decided to use the parameter based coding of individuals where the chromosome gets a value of parameters as a real number. The selection of individuals for further evolution is based on the fitness proportionate selection with its modification: stochastic universal sampling. The recombination of individuals is provided by Edge recombination crossover (ERX). A shape-based similarity approach is originally developed by Yanagisawa et al. in [8] for the optimization of the mobile object trajectory although applicable even in the shape - based similarity query.

The second part of the optimization procedure includes CFD simulation of flow over the whole

shape sequence of designed nozzles. The actual shape mutates towards the subsequent geometry until the final shape is met.

6 Results of steady optimization

For evolution of overall deformation from the originate to finalized shape sampled by $\Delta x = 0.1 \text{ mm}$ see Figure 4. The optimization of the shape sequence permutation led to the sequence gaining half of original value. The best channel shape sequence found with $D_{\text{tot}} = 3383 \text{ mm}$ is used to explore the optimization space. The best variant achieves about 9% less of vapour volume fraction at the exit of domain than the originally cylindrical channel. Despite an achieved improvement, possible limitations of the approach are found because the best variant comes with the highest exit diameter (coordinate y_2) available from limited design space. For further optimization, at least the upper boundary of coordinate y_2 should be increased. There are contours of phase volume rate in the Figure 5 for best variant found. The location of pressure minima corresponds to originate shape, but the pressure jump is distributed within larger area of channel exit and channel throat. Consequently the local pressure minimum is restricted.

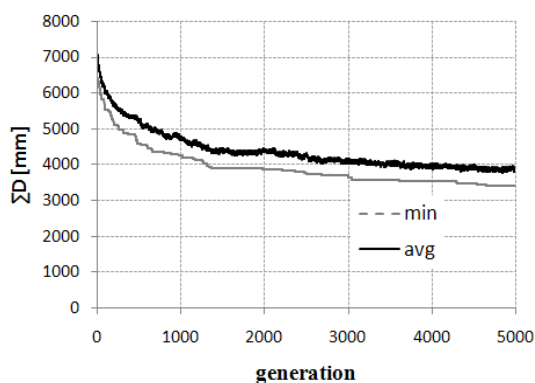


Figure 4: Evolution of average and minimal deformational path of shape sequences in the course of evolutionary algorithm.

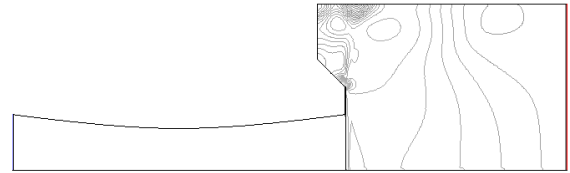


Figure 5: Isolines of vapour volume fraction in the best variant found by optimization.

$$0-0.5 \text{ m}^3_{\text{vapour}} / \text{m}^3_{\text{oil}}$$

7 Conclusions

The simplified method which enables the unsteady simulation of oil – choking plate interaction is developed and tested. This method was implemented into commercial FVM code to expand its abilities beyond standards. Numerous techniques used to stabilize the coupled simulations are exposed. Dynamic behaviour of plate lift is than solved and cavitation phenomenon observed. We have applied the shape-similarity-based optimization procedure to reduce the cavitation within the damping unite at steady state previously defined. The best by-pass channel shape and plate stiffness combination comes with the vapour volume rate limited by 15% when compared to original value.

References

- [1] Fluent Inc. *Fluent user documentation*. Lebanon : s.n., 2006.
- [2] Kolář J., Dvořák V. *Aerodynamic optimization of supersonic nozzle exploiting dynamic meshes and sensitivity analysis*, In the 2nd International Conference On Engineering Optimization 2010 Lisboa, Portugal, Instituto Superior Técnico, 2010. ISBN 978-989-96264-3-0.
- [3] Dvořák V., Kolář J. *Shape optimization of supersonic ejectors with several primary nozzles*. Lisboa, Portugal : In the 2nd International Conference on Engineering Optimization, 6.-9. september 2010. ISBN 978-989-96264-3-0.
- [4] Versteeg H. K., Malalasekera W. *An introduction to fluid dynamics*. Harlow : Pearsons education limited, 2007. ISBN-978-0-13-127498-3.
- [5] Holand, H J. *Adaption in natural and artificial systems*. Ann Arbor, Michigan : The University of Michigan Press, 1975.
- [6] Breitkopf P., Coelho R. F. *Multidisciplinary design optimization in computational mechanics*. s.l. : Wiley-ISTE, 2010. ISBN-10 1848211384.
- [7] Hynek J. *Genetic algorithms and genetic programming (in Czech)*. Prague : Grada Publishing ,a. s., 2008. ISBN 978-80-247-2695-3.
- [8] Yanagisawa Y., Akahani J., Satoh T. *Shape-based similarity query for trajectories of mobile objects*. Taipei : Mobile Data Management p. 63-77, 2003. ISSN 0302-9743.